

DREO

SMART CONTROL AIR FRYER

USER GUIDE

www.dreo.com



MANUFACTURER:

Shenzhen Hesung Innovation Technology Co., LTD

ADDRESS:

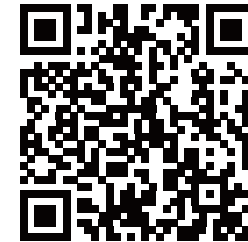
Yousuwei Building, Jiaxian Road, Shenzhen, China

✉ support@dreo.com

MODEL: DR-KAF001


Thank You for Choosing Dreo!

*Your support means the world to us
We hope you enjoy our air fryer as much as we did creating it*



Scan or visit dreo.com/warranty

to extend your warranty by registering your product. If you need any help, don't hesitate to email us to get expert support!

 support@dreo.com  (888) 520-3736  dreo.com/chat

Mon - Fri, 9:00 am-5:00 pm PST/PDT

Contents

01	Important Safety Instructions	10	Preheating
04	Getting to Know Your Air Fryer	11	Cooking Functions
04	Package Contents & Specifications	12	Preset Default Settings
05	Product Diagram	13	Start Cooking
06	Control Panel	14	More Functions
08	Display Messages	15	Cleaning and Maintenance
08	Using Your Air Fryer	17	Troubleshooting
08	Before First Use	19	Warranty and Service
08	Initial Use		

Important Safety Instructions

BEFORE USING THIS APPLIANCE READ ALL INSTRUCTIONS AND CAUTIONARY MARKINGS IN YOUR USER GUIDE AND ON THE APPLIANCE

When using an electrical appliance, basic precautions should always be followed, including the following:

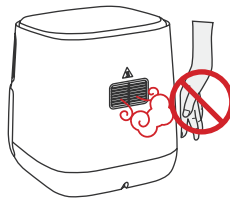
DANGER!



DO NOT touch hot surfaces. Use handle.



DO NOT block any ventilation openings. Hot steam is released through air outlet. Keep your hands and face clear of openings.

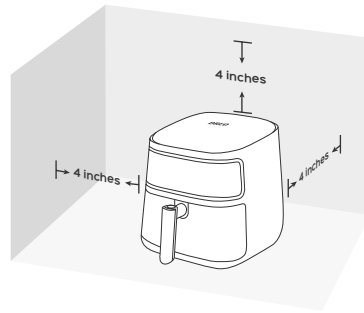


To protect against electrical shock, do not immerse the appliance, cord, or plug in water or other liquid.

WARNING

01. This appliance is not intended for use by persons (including children) with reduced physical, sensory or mental capabilities, or lack of experience and knowledge, unless they have been given supervision or instruction concerning the use of the appliance by person responsible for their safety.
02. Check if the voltage indicated on the appliance corresponds to the local main voltage before you connect the appliance.
03. DO NOT operate the appliance if the plug, the main cord or the appliance itself is damaged. Always make sure that the plug is inserted properly into a wall outlet.
04. Close supervision is necessary when any appliance is used by or near children. Children should be supervised to ensure that they do not play with the appliance. Cleaning and user maintenance shall not be done by children unless they are older than 8 and supervised.
05. DO NOT let the power cord hang over the edge of table or counter. Keep away from hot surfaces.
06. DO NOT plug in the appliance or operate the control panel with wet hands.
07. Never connect this appliance to an external timer switch or separate remote-control system in order to avoid a hazardous situation. To disconnect, turn off the appliance, then remove plug from the wall outlet.
08. Keep your air fryer away from flammable materials (curtains, tablecloth, etc.). Use on a flat, stable, heat-resistant surface away from heat sources or liquids.
09. DO NOT place on a stove, near gas or electric burners, or in a heated oven.
10. DO NOT use the appliance for any other purpose than described in this User Guide. The use of accessory attachments not recommended by the appliance manufacturer may cause injuries.
11. DO NOT leave the appliance unattended while in use. Extreme caution must be used when moving an appliance containing hot oil or other hot liquids.

12. DO NOT use outdoors.
13. DO NOT place anything on top of your air fryer. DO NOT store anything inside your air fryer.
14. After using the appliance, the metal cover inside is very hot, avoid contact with it after cooking. Unplug from outlet when not in use and before cleaning. Allow to cool before putting on or taking off parts, and before cleaning the appliance.
15. Immediately unplug the appliance if you see dark smoke coming out of the appliance. Wait for the smoke emission to stop, before you remove the pan from the appliance.
16. This appliance has a polarized plug (one prong wider than the other). To reduce the risk of electric shock, this plug is intended to fit into a polarized outlet only one way. If the plug does not fit fully in the outlet, reverse the plug. If it still does not fit, contact a qualified electrician. DO NOT attempt to modify the plug in any way.
17. DO NOT place the appliance against a wall or other appliances. Leave at least 4 inches of free space on the back and sides and 4 inches of free space above the appliance. DO NOT place anything on top of the appliance.



FOR HOUSEHOLD USE ONLY READ AND SAVE THESE INSTRUCTIONS

Getting to Know Your Air Fryer

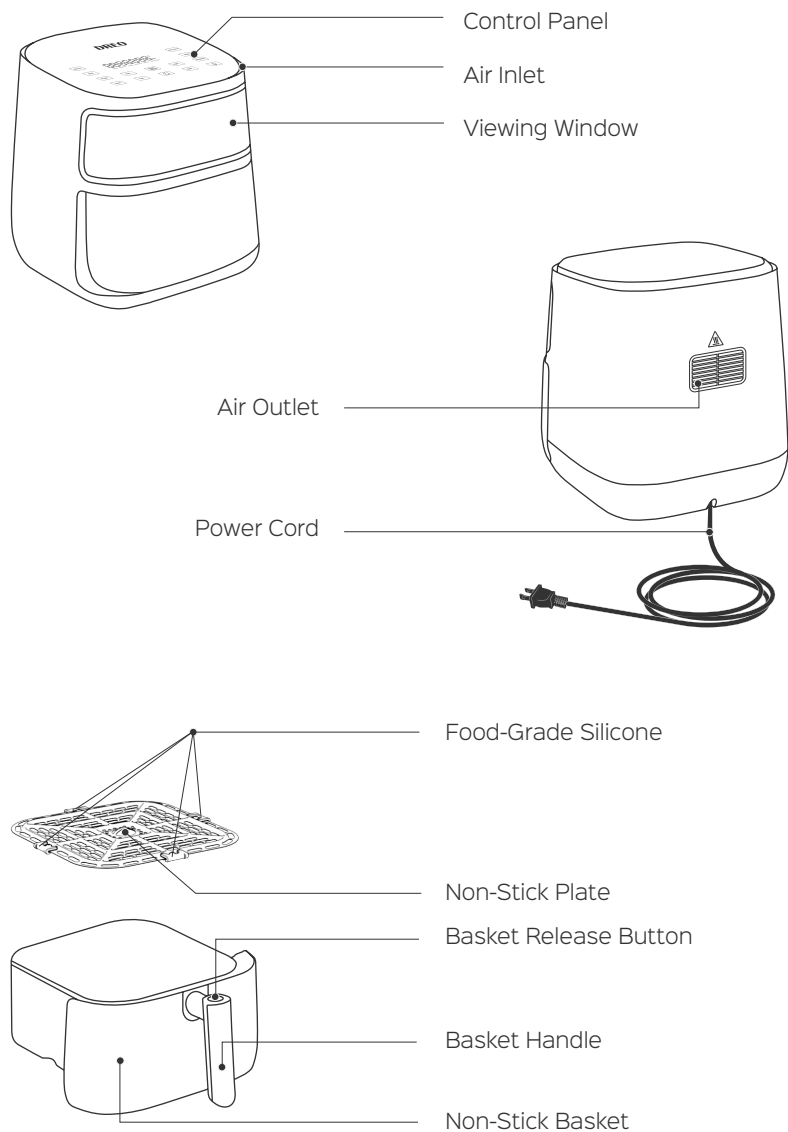
Package Contents

1 x 6.8-Quart Air Fryer
1 x Non-Stick Plate
1 x Cookbook
1 x Quick Reference Guide
1 x User Guide

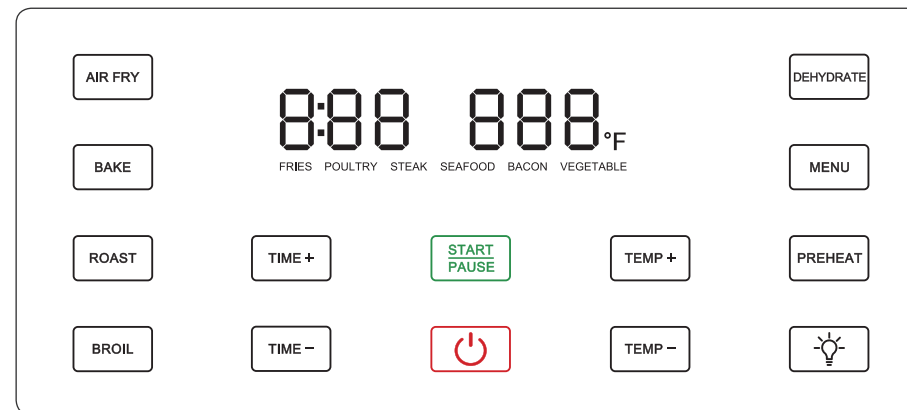
Specifications

Model	DR-KAF001
Voltage	AC 120V, 60Hz
Power	1500W
Capacity	6.8 Quart
Temperature Range	100°F~450°F

Product Diagram



Control Panel



Function Buttons:

- 01. AIR FRY:** Use this function to make your food crispy and crunchy, with little or no oil.
- 02. BAKE:** Use this function to bake cakes, cupcakes, breads and doughnuts.
- 03. ROAST:** Use this function to roast your vegetables or meat like you roast them in the oven.
- 04. BROIL:** Use this function to broil your food with high, direct heat like a grill.
- 05. DEHYDRATE:** Use this function to remove moisture in your fruits, vegetables, or low-fat meats and seafood.
- 06. MENU:** Use this function to select a preset program.
- 07. PREHEAT:** Use this function to preheat your air fryer.

Operating Buttons:

- 01. TEMP + / TEMP -**
Press **TEMP +** and **TEMP -** to adjust the cooking temperature in 5°F increments before or during cooking.
- 02. TIME + / TIME -**
Press **TIME +** and **TIME -** to adjust the cooking time before or during cooking.
- 03. LIGHT**
Press the light button to turn on/off the light in the cooking chamber. The light automatically turns off after 1 minute.
- 04. START / PAUSE**
Press **START / PAUSE** to start or pause cooking after a function is selected.
- 05. POWER**
Press the power button to turn on/off the air fryer.

Display Messages

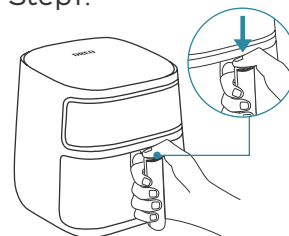
DISPLAY MESSAGE	MEANING	INDICATION	DURATION
0:20 380°F	20 MIN 380°F	Time and temperature.	The entire cooking process
rEA dy	READY	Preheating is done and the air fryer is ready to add food.	Flashes for 20 seconds
OP En	OPEN	The basket is not in position.	Remains until the basket is back in position
PAU SE	PAUSE	The air fryer has been put on pause.	Remains until START/PAUSE is pressed again
End	END	The cooking is finished.	Flashes for 20 seconds
SHAKE	SHAKE	The air fryer is ready for shaking or flipping.	Flashes for 20 seconds
OFF	OFF	The air fryer is turning off and going into standby mode.	Flashes for 20 seconds

Using Your Air Fryer

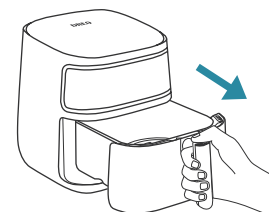
Before First Use

01. There's plastic inside! Make sure to remove all plastics.
02. Wash the nonstick basket and plate in warm, soapy water, then wipe dry.

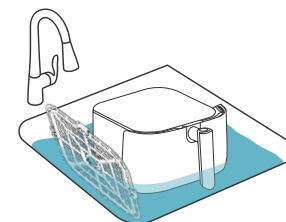
Step1:



Step2:



Step3:



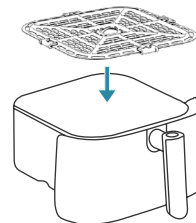
NOTE: Do not immerse the main unit in water or any other liquids.

Initial Use

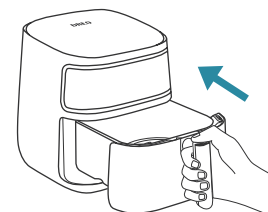
Before first use of your new air fryer, we recommend you to heat the air fryer at 400°F for 15 minutes to remove any remaining odor.

01. Place the non-stick plate into the basket and place the basket back into the air fryer.

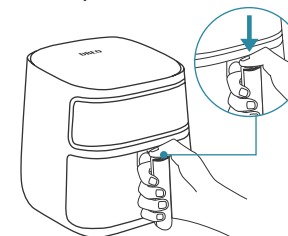
Step1:




Step2:

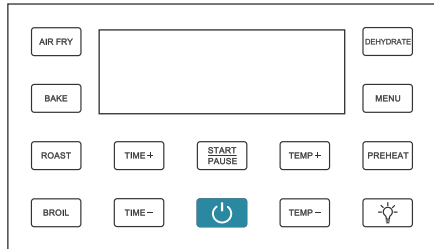


Step3:

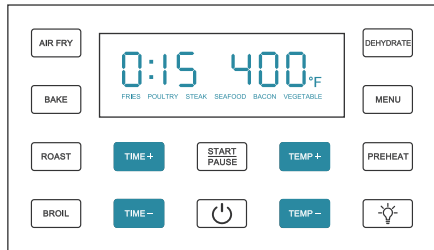


Initial Use

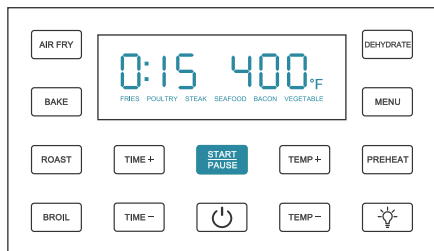
02. Plug into the electrical outlet. Press  to turn on.



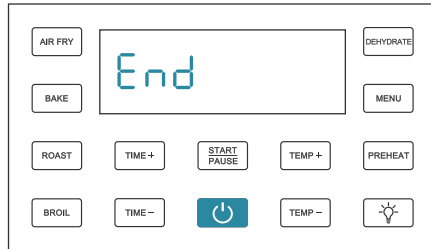
03. Adjust to 400°F and 15 minutes.




04. Press **START/PAUSE** to start and wait for 15 minutes.



05. The display will show "END" when the time is finished.



Note: It is recommended to wash the basket and plate again for complete odor removal.




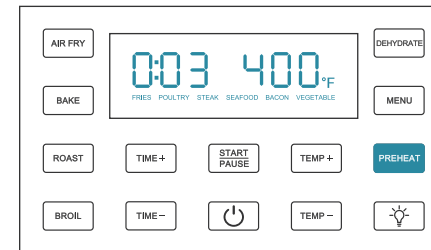
CAUTION

The basket and plate will become very hot after the heating. Allow them to cool before taking them for cleaning.

Preheating

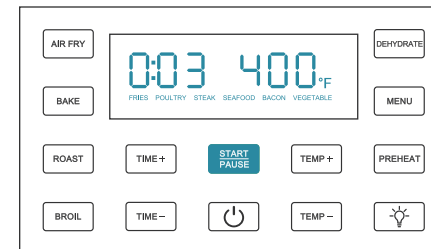
It is recommended to preheat before placing food into the air fryer unless your air fryer is already hot. Food will not cook thoroughly without preheating.

01. Press  to turn the air fryer on. Press **PREHEAT** and the display will show 400 °F and 3 minutes by default (make sure the non-stick plate is already inside the basket).

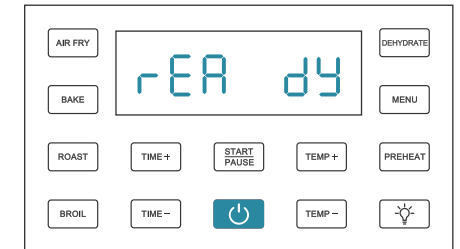


Note: You can press **TEMP+** or **TEMP-** to change the cooking temperature, the time will adjust accordingly.

02. Press **START/PAUSE** to start preheating.



03. When preheating is finished, the air fryer will beep 3 times and "READY" will flash on the display. Now the air fryer is ready to add food.



Note: "READY" will flash for 20 seconds if no action is taken by the user.

Cooking Functions

This air fryer uses special air circulating technology to cook the food. Every cooking function is programmed with a default time and temperature.

Function	Default Temperature (°F)	Adjustable Temperature (°F)	Default Time (Min)	Adjustable Time (Min)	Shake Reminder
AIR FRY	385	180-400	15	1-60	Y
BAKE	365	180-400	30	1-60	--
ROAST	380	180-400	18	1-60	Y
BROIL	450	350-450	10	1-60	--
DEHYDRATE	125	100-175	1h	1-72h	--

Note:

- 01. Cooking time may vary depending on your desired flavor or thickness of ingredients, etc.
- 02. You can check the food through the visible window or by pulling out the basket anytime during the cooking process.

Preset Default Settings

For general users, using a preset menu is the easiest way to cook some certain foods. Preset menus are programmed with a default time and temperature.


Preset	Default Temperature (°F)	Adjustable Temperature (°F)	Default Time (Min)	Adjustable Time (Min)	Shake Reminder
FRIES	380	180-400	20	1-60	Y
POULTRY	380	180-400	20	1-60	Y
STEAK	400	180-450	10	1-60	--
SEAFOOD	350	180-400	10	1-60	--
BACON	350	180-400	8	1-60	--
VEGETABLE	300	180-400	10	1-60	Y

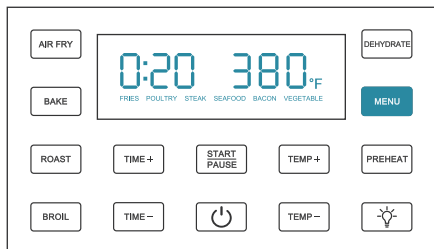
Note:

- 01. Cooking time may vary depending on your desired flavor or thickness of ingredients, etc. You can check the food through the visible window or by pulling out the basket anytime during the cooking process.
- 02. Shake reminder will alert you when 60% of the cooking time has passed, which is ideal for evenly cooking both sides of your food. The LED display will show "SHAKE".

Start Cooking

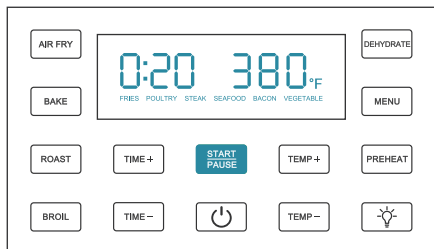
01. Preheat your air fryer. Add food when “**READY**” shows on the display (see page 10).

02. Press  to wake up the control panel and select a cooking function or preset menu. The default temperature and time will show on the display.

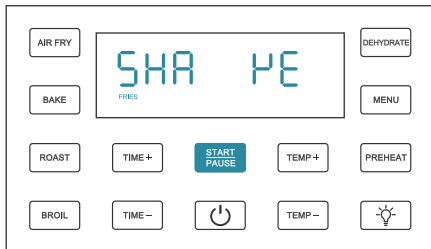


Note: You can adjust temperature and time based on your desired flavor or thickness of ingredients by pressing **TEMP + / TEMP-** and **TIME + / TIME -** before or during cooking.

03. Press **START/PAUSE** to start cooking.



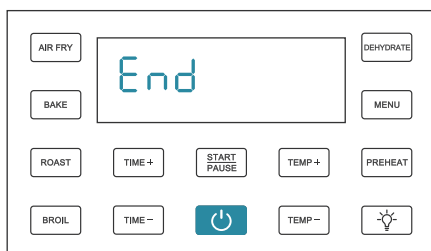
04. Shake or flip the food following the prompt of the air fryer if a preset with shake reminder is selected (**FRIES, POULTRY, VEGETABLE**). The LED display will flash “**SHAKE**” when 60% of the cooking time has passed.



Note:

When the air fryer displays “**SHAKE**”, it will continue cooking if no action is taken by the user in 20 seconds.

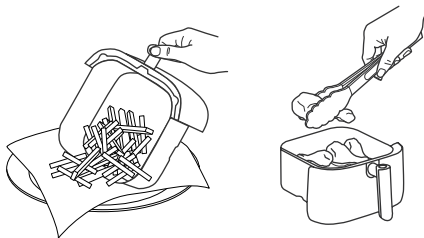
05. Once the cooking is finished, the display will show “**END**”.



Note:

“**END**” will flash for 20 seconds if no action is taken by the user.

06. Remove the food by tilting the basket gently or by using heat-resistant mitts /tongs.



More Features

1. Overheat Protection

When the interior temperature of the air fryer reaches a certain level, overheat protection will be triggered with error code E3 shown on the display. Please let the air fryer cool down to room temperature before turning it on again.

2. Memory Function

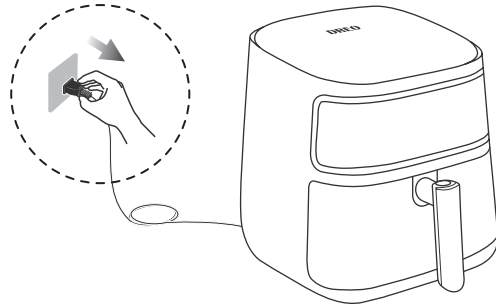
- 1). If the air fryer loses power during the cooking, it will return to its last status once connected to the power source again within 2 hours.
- 2). If the basket is drawn out of the cooking chamber, the air fryer will resume cooking once the basket is inserted back within 2 hours.

Cooking Guide

1. Don't overfill the basket, or the food will cook unevenly.
2. Pat dry liquid-marinated food with a paper towel before air frying.
3. To make your food crispier, you can spray or brush a small amount of oil on both sides of the food.
4. Use presets with shake reminder for tossing ingredients or for foods that need shaking/flipping during cooking.
5. Checking food during the cooking
 - 1). Press the light button to turn on the light inside the cooking chamber. Check the food through the viewing window.
 - 2). Take out the air fryer basket and check the food. The air fryer will automatically pause. Place the basket back and the air fryer will resume the cooking.
6. Cook time and temperature can be adjusted at any time during cooking. Simply press **TIME + / TIME -** or **TEMP + / TEMP -** to adjust the time or temperature.
7. To convert recipes from a conventional oven, reduce the temperature by 25°F and cooking time by 20%. Please check food frequently to avoid overcooking.
8. An instant-read thermometer is recommended to use to monitor the internal temperature of the food. After the cooking time is complete, remove food immediately to avoid overcooking.

Cleaning and Maintenance

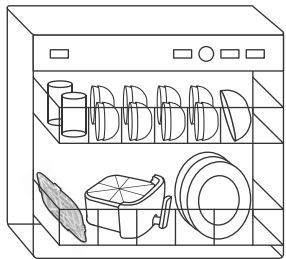
Unplug your air fryer and let it cool down before cleaning.



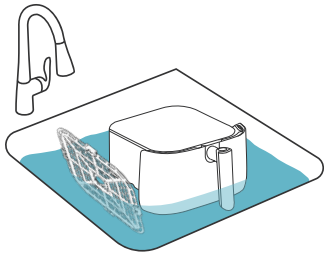
Non-Stick Plate & Air Fryer Basket

- 1). Use dishwasher for cleaning, or wash with warm, soapy water and a non-abrasive sponge. Soak if necessary.
- 2). Wipe dry.

Step1:



OR



Step2:

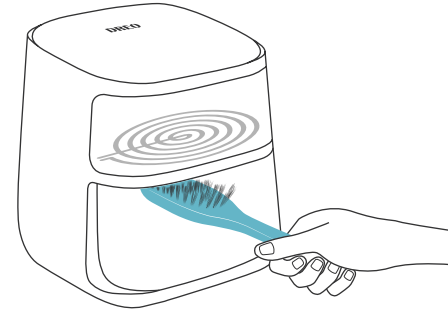


Note:

- Remove and clean after each use.
- Ensure all grease and food debris are fully removed.

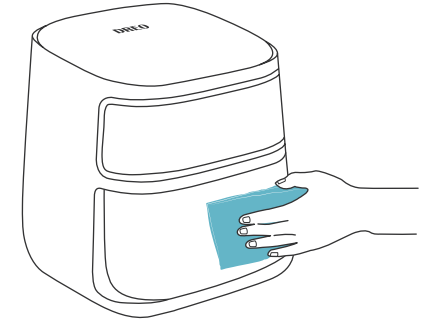
Heating Element

Use a soft brush to clean the heating element.



Inside of the Air Fryer

Use a slightly moist, non-abrasive sponge or cloth to clean the inside of the air fryer. Do not immerse in water.



Dry Before Next Use



Note:

It is recommended to use degreaser for efficient cleaning of remaining residue.

Troubleshooting

Problem	Possible Solution
The air fryer will not turn on.	Make sure the air fryer is plugged in.
	Push the basket securely into the air fryer.
Foods are not completely cooked.	The basket is overfilled. Divide the food into smaller batches.
	Increase cooking temperature or time.
Foods are cooked unevenly.	Ingredients that are stacked on top of each other or close to each other need to be shaken during cooking. The non-stick plate should be placed in the basket.
Foods are not crispy after air frying.	Spraying or brushing a small amount of oil on foods can increase crispiness (see page 14).
Temperature won't go any higher.	Each cooking function and preset menu have their max temperature. Please refer to page 11-12.
White smoke is coming out of the air fryer.	The air fryer may produce some white smoke when you use it for the first time. This is normal.
	Make sure the basket and the non-stick plate is cleaned properly and not greasy.
	Frying greasy foods will cause oil to leak into the basket. This oil will produce white smoke. This is normal and should not affect cooking.

Troubleshooting

Problem	Possible Solution
Dark smoke is coming out of the air fryer.	Immediately unplug your air fryer. Food is burning. Wait for smoke to clear before pulling the basket out.
How do I pause or stop the cooking?	Remove the basket from the unit to pause the cooking and place it back to resume, OR press START/PAUSE to pause.
Is the basket safe to put on my countertop?	Use caution when handling, and place on heat-safe surfaces only.
The display shows error code "E1".	There is an open circuit in the temperature sensor. Contact Customer Support.
The display shows error code "E2".	There is a short circuit in the temperature sensor. Contact Customer Support.
The display shows error code "E3".	Overheat protection has been triggered. Please let it cool down before turning it on again.

If your problem is not listed or still persists, contact our Customer Support at support@dreo.com.

Warranty and Service

Default 12-Month Warranty

Thanks for choosing DREO air fryer. This product is covered with DREO product and labor warranty for 12 months from the date of its original purchase.

Extend Your Warranty

Extend your warranty by registering your new product on our website <https://www.dreo.com/warranty>.

The warranty will not apply in cases of:

1. Accident, misuse, or repairs performed by unauthorized personnel.
2. Any unit that has been tampered with or used for commercial purposes.
3. Normal wear and tear of wearable parts.
4. Use of force, damage caused by external influences.
5. Damage caused by non-observance of the User Guide, e.g. connection to an unsuitable mains supply or non-compliance with the instructions.
6. Partially or completely dismantled appliances.
7. Defects caused by or resulting from damages from shipping or from repairs, service, or alteration to the product or any of its parts that have been performed by a repair person not authorized by DREO.

We can only provide after-sales service for products that are sold by DREO or DREO authorized retailers and distributors. If you have purchased your unit from a different place, please contact your seller for return and warranty issues.

Customer Support

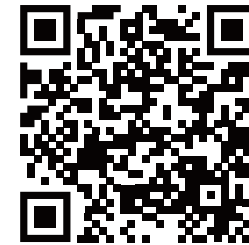
We're Here to Help!

If you encounter any issues or have any questions regarding your new product, please contact our helpful Customer Support Team. Your satisfaction is our goal!

 (888) 520-3736  dreo.com/chat  support@dreo.com

Mon - Fri, 9:00 am-5:00 pm PST/PDT

* Please have your order confirmation number ready before contacting Customer Support.



Scan or visit us on Facebook

to connect with us and explore top tips, latest recipes and new ideas. Ask us anything and we're always ready to help.



MADE IN CHINA



Intertek
5012531